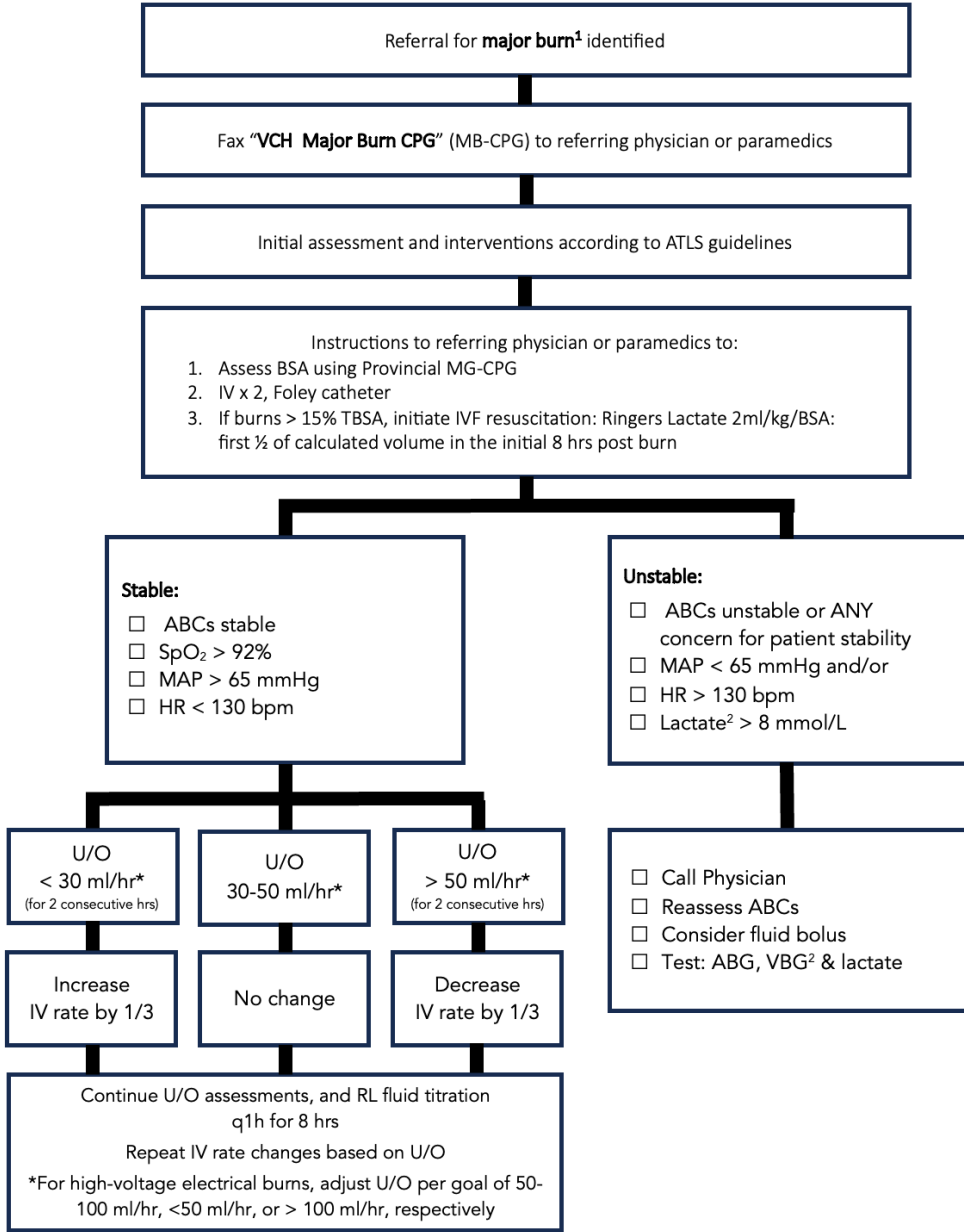


# First 8 Hours Post Burn Major Burns Clinical Practice Guidelines

Please note that this is a guideline only, not a substitute for clinical judgement.



<sup>1</sup>Major Burn:

- 20% BSA partial and/or full thickness any age
- 10% BSA partial and/or full thickness age < 10 or > 50
- Burns to hands, face, feet, genitalia, joints
- Full thickness burns > 5% BSA any age
- electrical burns
- chemical burns
- inhalation injury
- burns associated with major trauma

<sup>2</sup>Cyanide toxicity:

- Consider with enclosed-space fire, lactate > 8-10 mmol/L, or narrowing of PaO<sub>2</sub> gradient on ABG vs VBG