

Reappointment How to Guide:




Personal / Non-PHSA Computer: What Web-Browser do I have?

1

Are you using a Apple (Mac) [2A] or Windows [2B] based computer?

2A




1. Before you begin, you should ensure your OSX / macOS is a more recent version. For assistance on how to do this, visit our guide at http://www.phsa.ca/medical-staff/Documents/eAR_Guide_OperatingSystem.pdf
2. When using your Mac computer to access AppCentral for your reappointment, we strongly recommend you use the web-browser, Google Chrome.
3. **Not sure if you have google Chrome?**
4. Press  + [SPACE BAR], a search bar should open. (Note:  is the COMMAND button)
5. In the search bar, type **chrome** and you should see the Chrome icon. 
6. If you do not see the icon, proceed to Step 3, below.



3

1. **What if I do not have Chrome Installed?**
2. Click on this link <https://www.google.com/chrome/>


[OR]

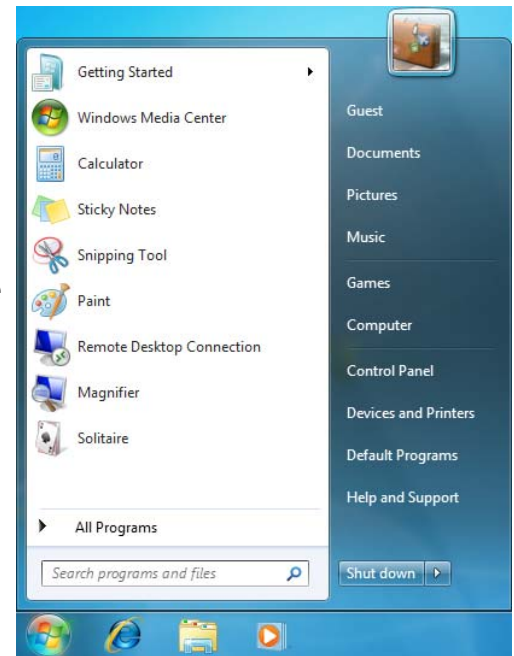
1. Open Safari . In the address bar, type: **www.google.com/chome** and press enter.
2. Once the page loads, click **Download Chrome**.
3. Once it downloads it should automatically proceed with the installation and be sure to **Set Chrome as Default**.

Annual Reappointment How to Guide: Personal / Non-PHSA Computer: What Web-Browser do I have?

2B



1. Before you begin, you should ensure your version of Windows is greater than Windows XP . For assistance on how to do this, visit our guide at http://www.phsa.ca/medical-staff/Documents/eAR_Guide_OperatingSystem.pdf
2. When using your Windows PC computer to access AppCentral for your reappointment, we strongly recommend you use the web-browser, **Google Chrome**.
3. **Not sure if you have google Chrome?**
4. Go to the **Start Menu**, select **All Programs**, and look for Google Chrome (should be alphabetical).
5. Google Chrome's icon looks like this. 
6. If you do not have google chrome installed, proceed to step 3 below.



3

1. **What if I do not have Chrome Installed?**
2. Click on this link <https://www.google.com/chrome/>

[OR]

1. Open Internet Explorer 

In the address bar, type: **www.google.com/chome** and press enter.

2. Once the page loads, click **Download Chrome**.
3. Once it downloads, proceed with the installation and be sure to **Set Chrome as Default**.