

# Lab Recycling Reference Guide



Blue Wrap:  
Soft Plastic



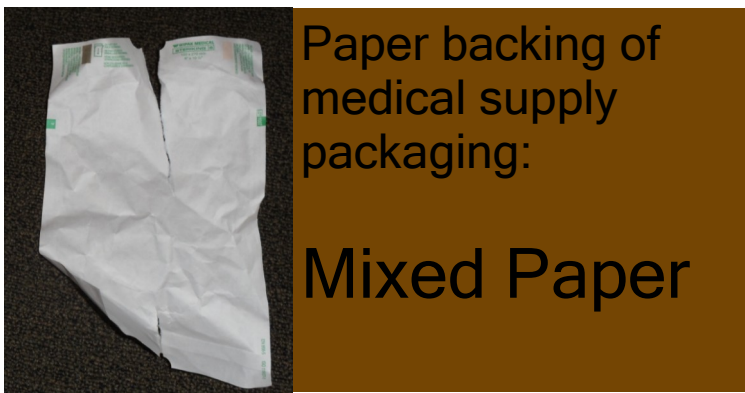
Packaging:  
Soft Plastic



Packaging:  
Soft Plastic



Packaging:  
Soft Plastic



Paper backing of  
medical supply  
packaging:  
Mixed Paper



Rubber Glove Box:  
Mixed Paper

If backing of medical supply packaging can be ripped, it can go to mixed paper. If not, put in garbage



Plastic container:  
Rigid Plastic  
& Tin



Plastic container:  
Rigid Plastic  
& Tin



Plastic container:  
Rigid Plastic  
& Tin



Wash buffer/isotone con-  
tainer:  
Rigid Plastic &  
Tin

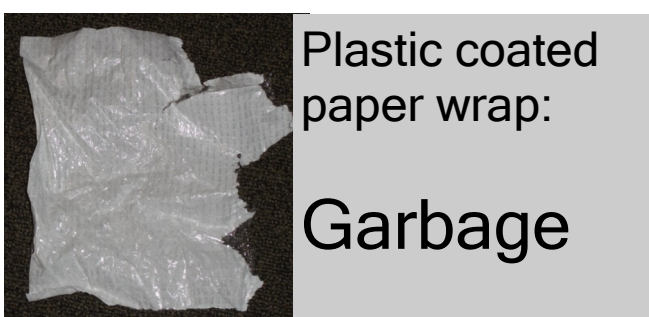


Plastic Bottle:  
Rigid Plastic  
& Tin

Any piece of rigid/hard plastic is accepted in the rigid plastic stream. No minimum size restrictions or number required.



Paper Towel:  
Garbage



Plastic coated  
paper wrap:  
Garbage



Mixed Metal  
Packaging:  
Garbage

Questions? Contact [recycling@phsa.ca](mailto:recycling@phsa.ca)

