

Lab Recycling Reference Guide



Blue Wrap:
Soft Plastic



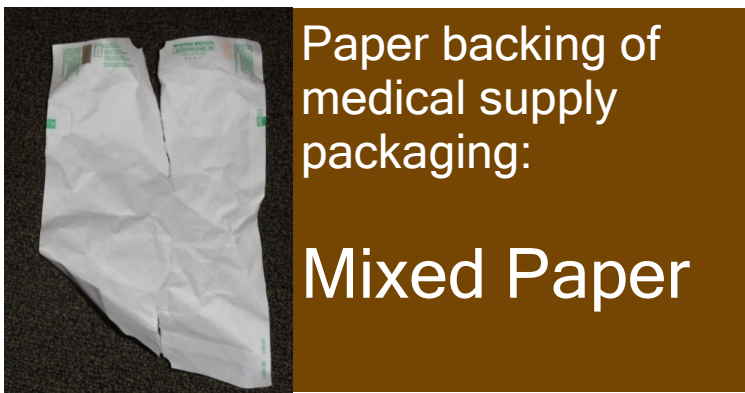
Packaging:
Soft Plastic



Packaging:
Soft Plastic



Packaging:
Soft Plastic



Paper backing of
medical supply
packaging:
Mixed Paper



Rubber Glove Box:
Mixed Paper



Plastic container:
Rigid Plastic
& Tin

If backing of medical supply packaging can be ripped, it can go to mixed paper. If not, put in garbage



Plastic container:
Rigid Plastic
& Tin



Plastic container:
Rigid Plastic
& Tin



Wash buffer/isotone con-
tainer?:
Rigid Plastic &
Tin

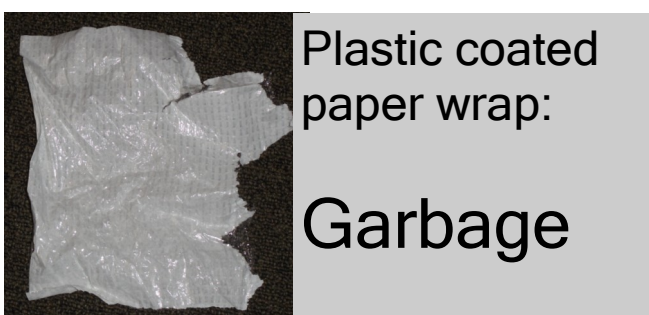


Plastic Bottle:
Rigid Plastic
& Tin



Paper Towel:
Garbage

Any piece of rigid/hard plastic is accepted in the rigid plastic stream. No minimum size restrictions or number required.



Plastic coated
paper wrap:
Garbage



Mixed Metal
Packaging:
Garbage

Questions? Contact recycling@phsa.ca

